

Xpanel

WINDOWS CE BASED NEW TOUCH



CIMON Xpanel

WINDOWS CE BASED NEW TOUCH



Durable Reinforced Plastic Applied

The improved heat resistant and shock resistant properties of the case safely protects the electrical components of the product.

High Quality LED Display

Low-power, low-heat and full-brightness make it the most powerful and vivid high-definition HMI in the market.

Variety of Interfaces

Ethernet, Serial (RS232/485), USB Host/Tool, SD card slot included.
(except for some models)

Convenient and Powerful Designing Tool

powerful features, such as infinite tag database, various communication drivers, more than 20,000 graphic library objects, and user-friendly interface make it very suitable for industrial applications.

Auto Page Resize

Same projects can be used on all XPANEL with different resolution and size.



Easy-to-use Script Editor

Excellent applicability with a C language based macro editor.



Project Protection Function

Non-authorized personnel cannot extract the project from an XPANEL.



Real-time Data Logging

The reports can be saved as CSV files onto the internal memory, SD card, or USB memory card and can be viewed in Microsoft EXCEL.





Multi-Language Supported

Supports every language from around the world to be able to easily integrate the project anywhere in the world.

Powerful and Versatile Communication

Supports Serial communication (RS232, RS485/422) and Ethernet communication as standard and Provides more than 200 communication drivers of major equipment used all around the world for an easy and flexible network solution.



Unbreakable Security Control

Protects the system safely from unauthorized access with 10 security levels.



Intelligent Self-Diagnosis Function

Easy monitoring of the current status of XPANEL with system status logging capabilities and communication frame monitoring function.



USB Scanner



USB Keyboard



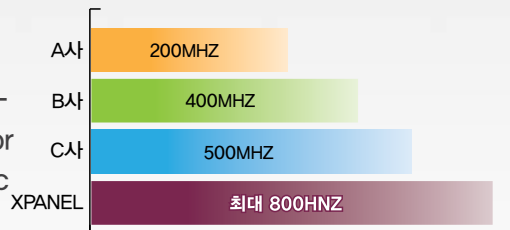
USB Printer

Connection with External USB Devices



Ultrafast CPU Processor

Equipped with high-speed industrial CPU which has low-power consumption and low-temperature operation for complex operations and fancy graphic processing.



Operating Temperature of 0°C~60°C

Reliable operation even in extreme conditions of industrial environment.



Variety of Graphic Object Library

Provides more than 20000 kinds of graphic objects for visually pleasing projects.

Painless Project Download/Upload



SD Card



USB



USB Cable



Ethernet

State-of-the-art High-Definition Display

Supports 262,000 FULL COLOR SVGA for delicate graphic tasks and the full-brightness and high-definition LED display that brings the pictures to life.



Experience Ultimate Performance Beyond the Norm

- High-speed CPU embedded
- Large memory size and user storage
 - XT04/07 128MB, XT10/12 256MB DDR2 SDRAM
 - 128MB SLC NAND Flash
 - Multiple page components and objects
- High-quality color expression up to 16.7M colors
- High-resolution display up to Max 1024 x 768

Easy Operating Environment

- Based on Windows CE / Windows Embedded Compact 7
- Manages the project data by Activesync or Mobile Device Center

Convenient Project Download

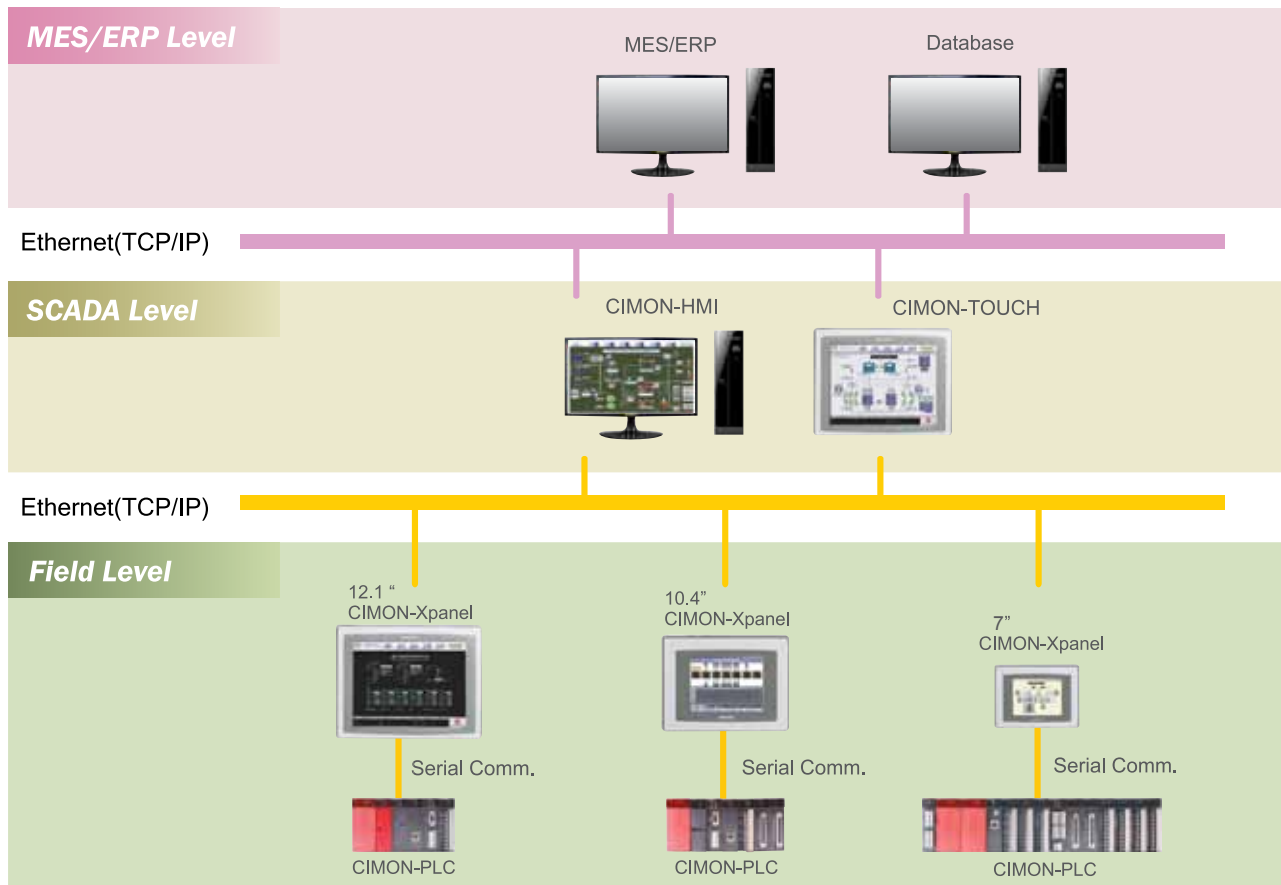
- Project files downloadable through XpanelDesigner
- Easy project downloading through USB cable / Ethernet cable / SD memory card / USB memory

Flexible

- Supports SD memory card
- Provides various communication drivers and if requested, wanted drivers can be developed for free
- Enables to connect to various external devices through USB
- Easy to manage by built-in maintenance functions

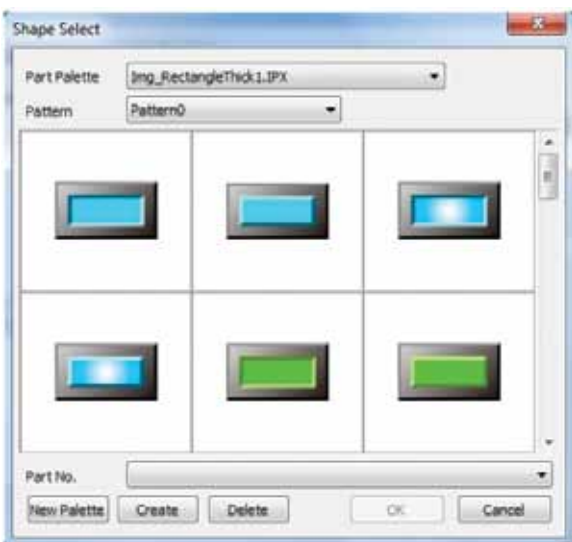
Comfortable Network Environment

- Supports various communication interface
 - Built-in 10/100M Ethernet port (except XT04CD-DN, XT07CD-AN/DN)
 - Two built-in serial ports
- Excellent Scalability
 - Built-in USB(Host) port which enables to connect to USB devices such as keyboard, mouse, USB storage, etc.
 - Built-in SDHC card slot (except XT04CD, XT07CD-AN/DN)
- Integrated Networking Solutions
 - Operates up to 3 communication ports concurrently (2 serial, 1 ethernet)
 - All models support multi-drop networking : RS485 port, 10/100M Ethernet port
 - Easy communication with other CIMON-Xpanels or CIMON-SCADA
 - Convenient communication with other monitoring devices or software by MODBUS RTU/TCP slave
 - Various drivers supported



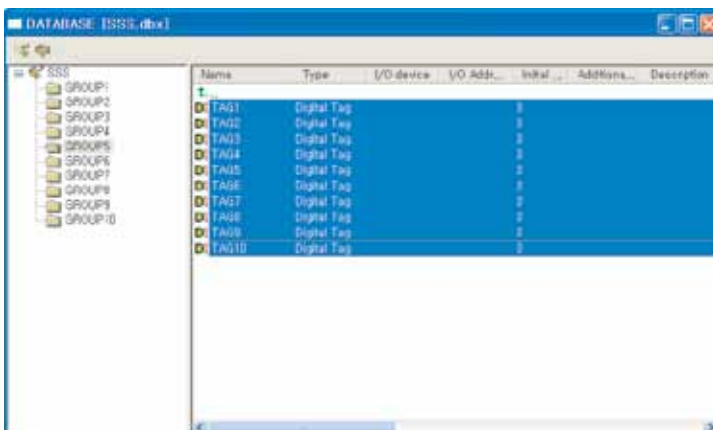
- User can create his own animation object
- Provides the simulator for animation object
- Newly made animation can be added to the library
- Supports 24bit bitmap image

■ Convenient Switch/Lamp Object



- Simple mouse operations provide the switch and lamp functions
- Up/down action is divided in the switch function
- Up to 256 steps can be defined in the lamp function
- Provides 8000 part palette

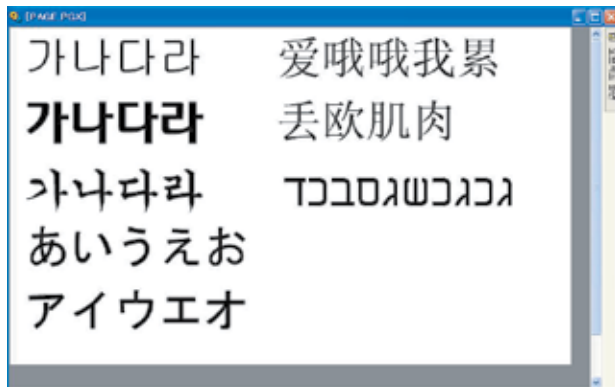
■ Simple and Easy Database Manager



- All the address data can be identified and modified in the database
- Database compatible with Excel
- Easy to exchange the project to other devices

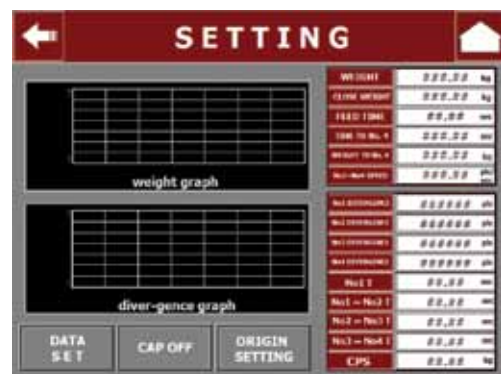
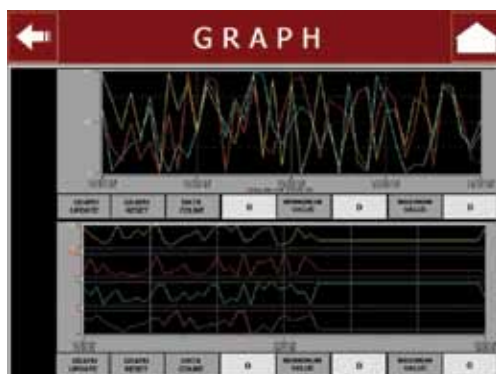
CIMON-XPANEL

- Supports multi-language and various fonts
 - Enables the use of installed fonts from Windows
 - Supports unicode



Supports a Variety of Special Function

- Provides various forms of trend
 - YT, XY, Log, ST, SPC, Scope
 - Enables to set a sampling period up to 100 ms
 - Provides historical trend (YT, XY)
 - Supports zoom feature (YT, XY)
 - Save as a CSV file (YT, Log)
 - Enables to display a data log (Scope)
 - Supports special purpose trend (ST, SPC)



- Alarm



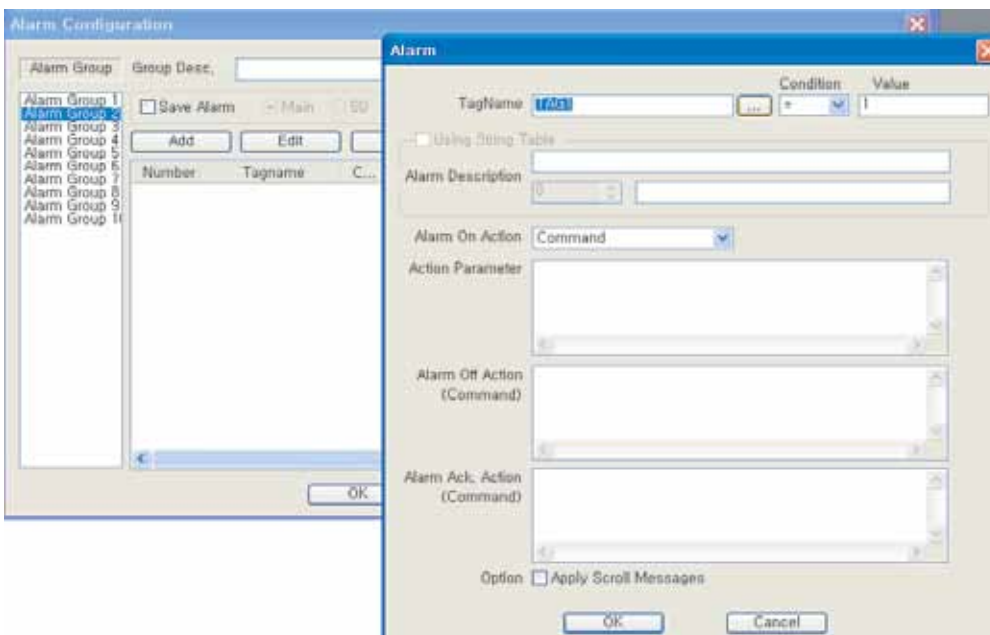


- Supports 10 alarm groups
- Each alarm group stores up to 200 alarms
- Depending on the set, the alarm will be saved at power-off
- Alarm summary displays alarm history on the screen
- desired status can be displayed on the screen
- Alarm on/off action can be specified (supports open page/command expression)
- Enables to change font and size of alarm summary object
- Provides alarm acknowledge functionalities
- Supports customized alarm summary control button

■ Script

- Scripts are activated to execute by event, time period or function call
- Supports script language of C syntax
- Internal script function can control the advanced features of Xpanel
- Enables to call user-defined function

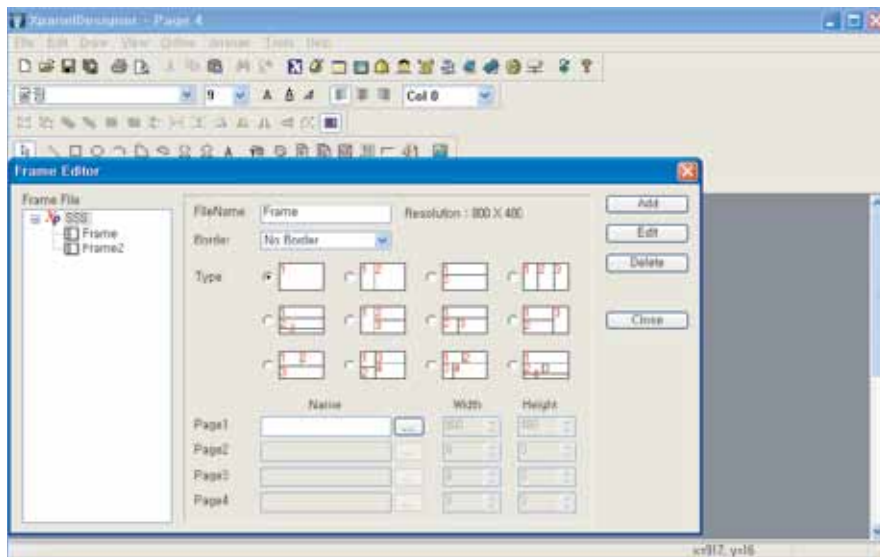
■ Data Log



- Enables to create up to 32 data blocks (each data block can store up to 2048)
- Collected data through data collect object can be displayed on table
- Collected data through scope trend can be displayed on graph

CIMON-XPANEL

■ Frame Editor



- Provides split-screen
- The structure and the size of the frame can be edited
- Provides various forms of frame

■ Simulator



- Enables to precheck the project on the PC without the Xpanel
- Enables to modify the tag value on the simulator remote control window
- Runs on the PC with the same resolution as the real screen
- Enables to check the scripts and the alarm

■ Frame Editor

- Provides split-screen
- The structure and the size of the frame can be edited
- Provides various forms of frame

» General Specification

Item	Description
Permitted Voltage	DC24V or AC100-240V
Ambient Temperature	0℃ ~ 50℃
Storage Temperature	-10℃ ~ 60℃
Ambient Humidity	10%RH ~ 90%RH(Non-condensing, wet bulb temperature: 39°C max.
Storage Humidity	10%RH ~ 90%RH (Non-condensing, wet bulb temperature: 39°C max
Air Pressure Vibration Resistance (Availment altitude)	800hPa ~ 1114hPa(Up to 2000m/6,500ft)
Atmosphere	0.1mg/m ² or less
Pollution Degree	Less than equal to Pollution degree 2
Atmosphere	Free from corrosive gases and excessive dust
Vibration Resistance	IEC61131-2 Compliant Occasional Vibration 10Hz to 75Hz 0.075mm, 57Hz to 150Hz 9.8m/s ² Continuous Vibration 10Hz to 57Hz 0.035mm, 57Hz to 150Hz 4.9m/s ² X,Y,Z directions for 10 cycle (80min.)
Noise resistance	1.5kV, 1uS
Electrostatic Discharge Immunity	Contact Discharge 4kV (IEC61000-4-2)
	Air Discharge 8kV

CIMON-XPANEL



XT04CD-DN



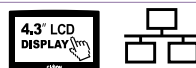
XT07CD-DN



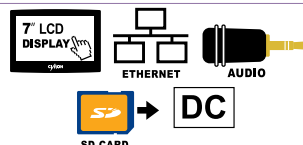
XT07CD-AN



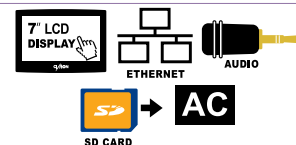
XT04CD-DE



XT07CD-DE

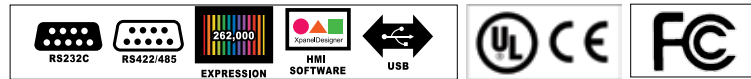


XT07CD-AE



» Specification

Type		XT04CD-DN	XT04CD-DE	XT07CD-DN	XT07CD-AN	XT07CD-DE	XT07CD-AE
Panel Size		4.3"		7"			
Resolution		480 x 272		800 x 480			
LCD		Color TFT					
Color		262K Colors					
Luminance		400 cd/m²					
Memory		128MByte DDR2 SDRAM					
Storage		128MByte SLC NAND Flash					
Operating System		Windows CE 6.0					
Programming Tool (HMI)		Xpanel Designer					
Audio		None				1 Port	
Interface	Ethernet	None	10/100 BaseT	None		10/100 BaseT	
	Serial (COM1)	RS232C					
	Serial (COM2)	RS422/485					
	Serial (COM3)	None					
	USB Host	1 Port					
	Tool Port	1 Port (for Loader)					
	SD Card Slot	None				1 Slot	
Input Power		DC24V		DC24V	AC100-240V	DC24V	AC100-240V
Dimension(mm)		128 X 102 X 50		185 X 127 X 50			
Panel Cut(mm)		120 X 94		177 X 119			



XT08CD-D



XT10-CD-D



XT12CD-A



XT08CD-A



XT10CD-A



XT15CD-A



Type		CM-XT08CD-A	CM-XT08CD-D	XT10CD-D	XT10-CD-A	XT12CD-A	CM-XT15 CD-A
Panel Size		8"		10.4"		12.1"	15"
Resolution		800 x 600					1024 x 768
LCD		Color TFT					
Color		262K Colors					16.7M Colors
Luminance		350cd/m²		400 cd/m²		450 cd/m²	400 cd/m²
Memory		128MByte DDR2 SDRAM		256MByte DDR2 SDRAM			
Storage		128MByte SLC NAND Flash					
Operating System		Windows CE 6.0		Windows Embedded Compact 7			
Programming Tool (HMI)		Xpanel Designer					
Audio		None					
Interface	Ethernet	10/100 BaseT					
	Serial (COM1)	RS232		RS232C			
	Serial (COM2)	RS422/485		RS232C			
	Serial (COM3)	None		RS422/485			
	USB Host	1 Port					
	Tool Port	1 Port (for Loader)					
	SD Card Slot	1 Slot					
Input Power		AC100-220V	DC24V		AC100-240V		
Dimension(mm)		227.5 X 176.5 X 59.5		280 X 220 X 47		330 X 250 X 83	395 X 310 X 89
Panel Cut(mm)		217 X 166		267 X 207		319 X 239	382 X 297

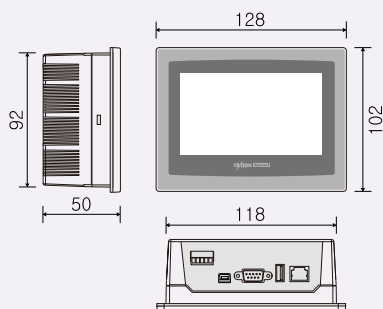
CIMON-XPANEL

Dimension

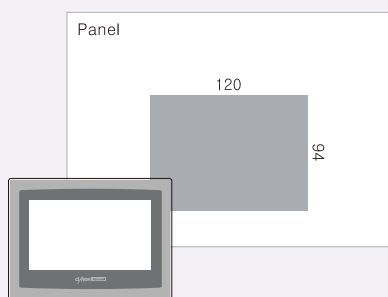
Unit : mm

XT04CD

■ Dimensions

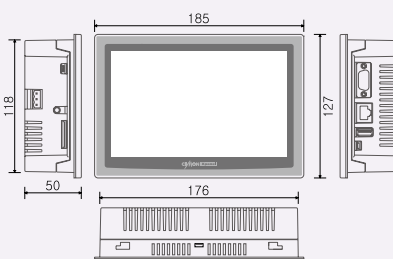


■ Panel cut

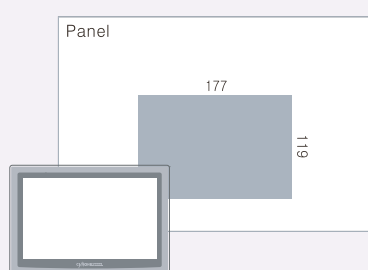


XT07CD

■ Dimensions

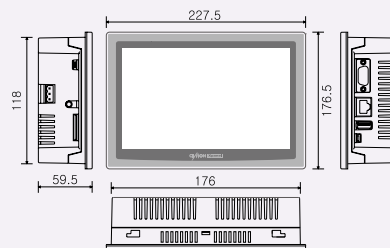


■ Panel cut

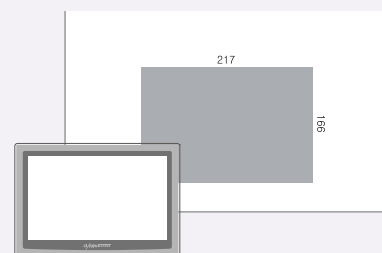


XT8CD

■ Dimensions

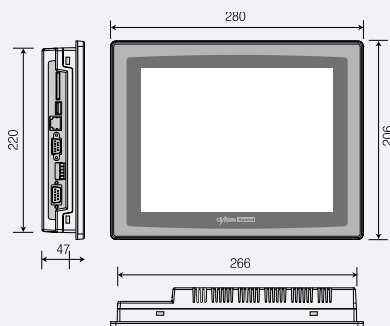


■ Panel cut

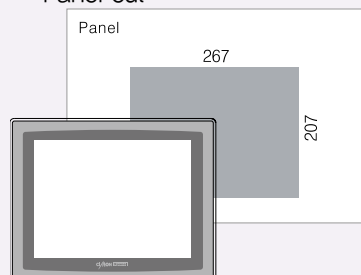


XT10CD

■ Dimensions

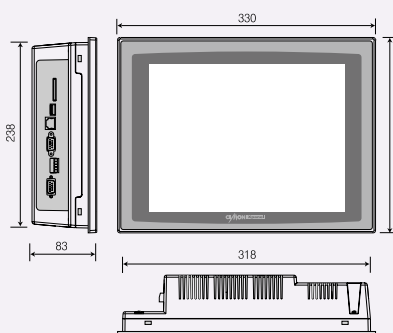


■ Panel cut

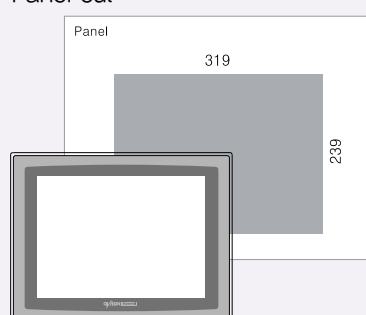


XT12CD

■ Dimensions

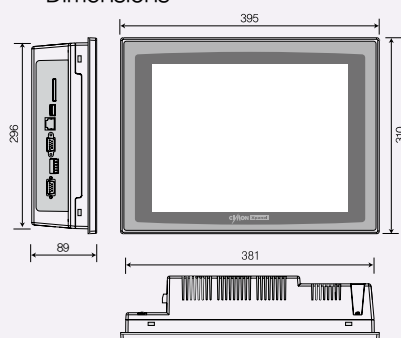


■ Panel cut

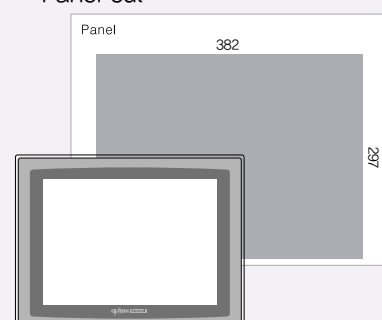


XT15CD

■ Dimensions



■ Panel cut





KDT B/D, #272-1, Yatap-dong, Bundang-gu, Seongnam-si, Gyeonggi-do, 463-836 South Korea
TEL : +82-31-778-3071 / FAX : +82-31-778-3009 / Home page : www.kdtsys.com